

General Description

PARKING BRAKE

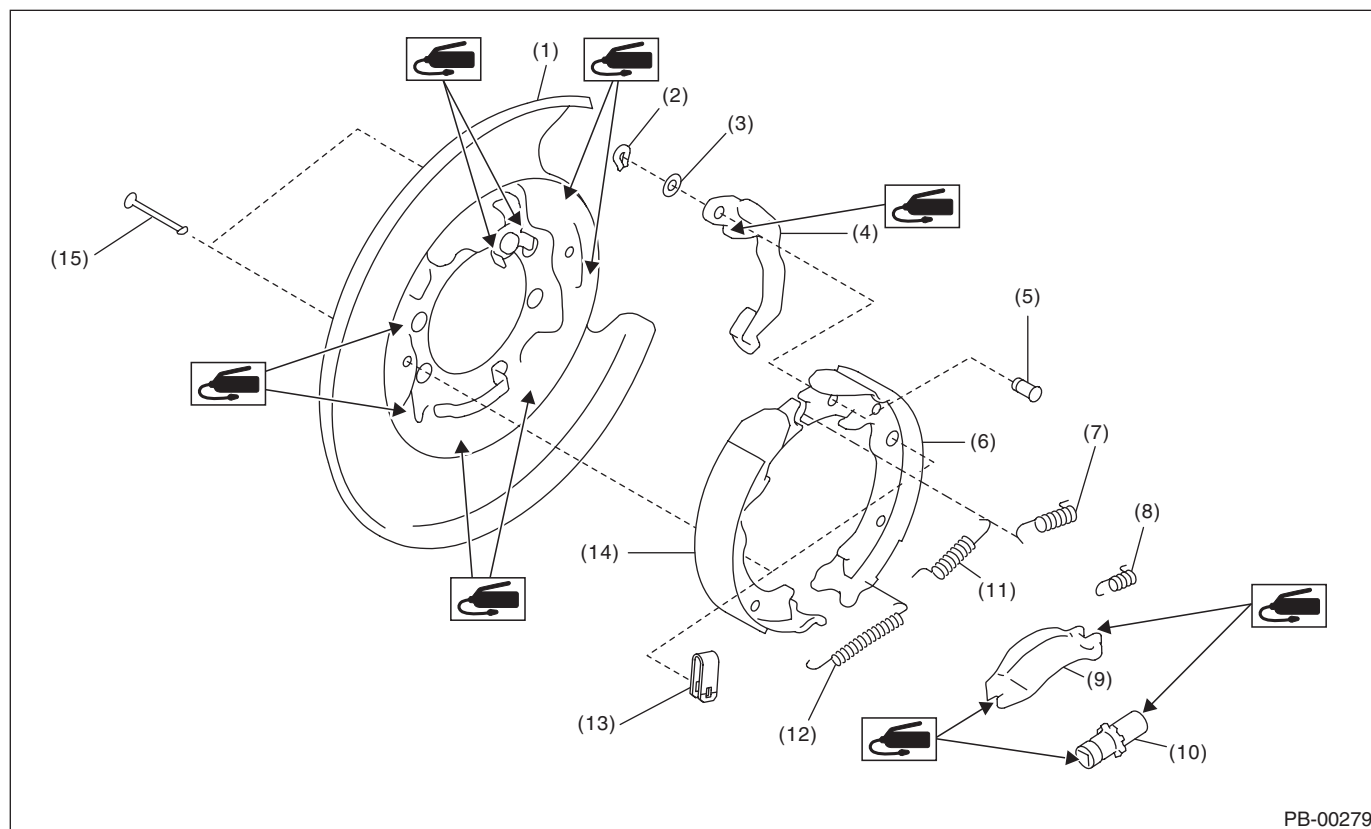
1. General Description

A: SPECIFICATION

Item		Specification	
Type		Drum in disc, duo servo type	
Effective drum diameter	mm (in)	190 (7.48)	
Lining dimensions (Length × Width × Thickness)	mm (in)	165.0 × 30.0 × 3.5 (6.51 × 1.181 × 0.14)	
Inside diameter	mm (in)	Standard	190 (7.48)
		Limit	191 (7.52)
Lining thickness	mm (in)	Standard	3.5 (0.14)
		Limit	1.5 (0.059)
Clearance adjustment		Manual adjustment	
Free play adjusting method		Auto adjuster	
Operation method		Manual lever type	
Lever stroke	Notches/N (kgf, lbf)	7 — 8/200 (20.4, 45)	

B: COMPONENT

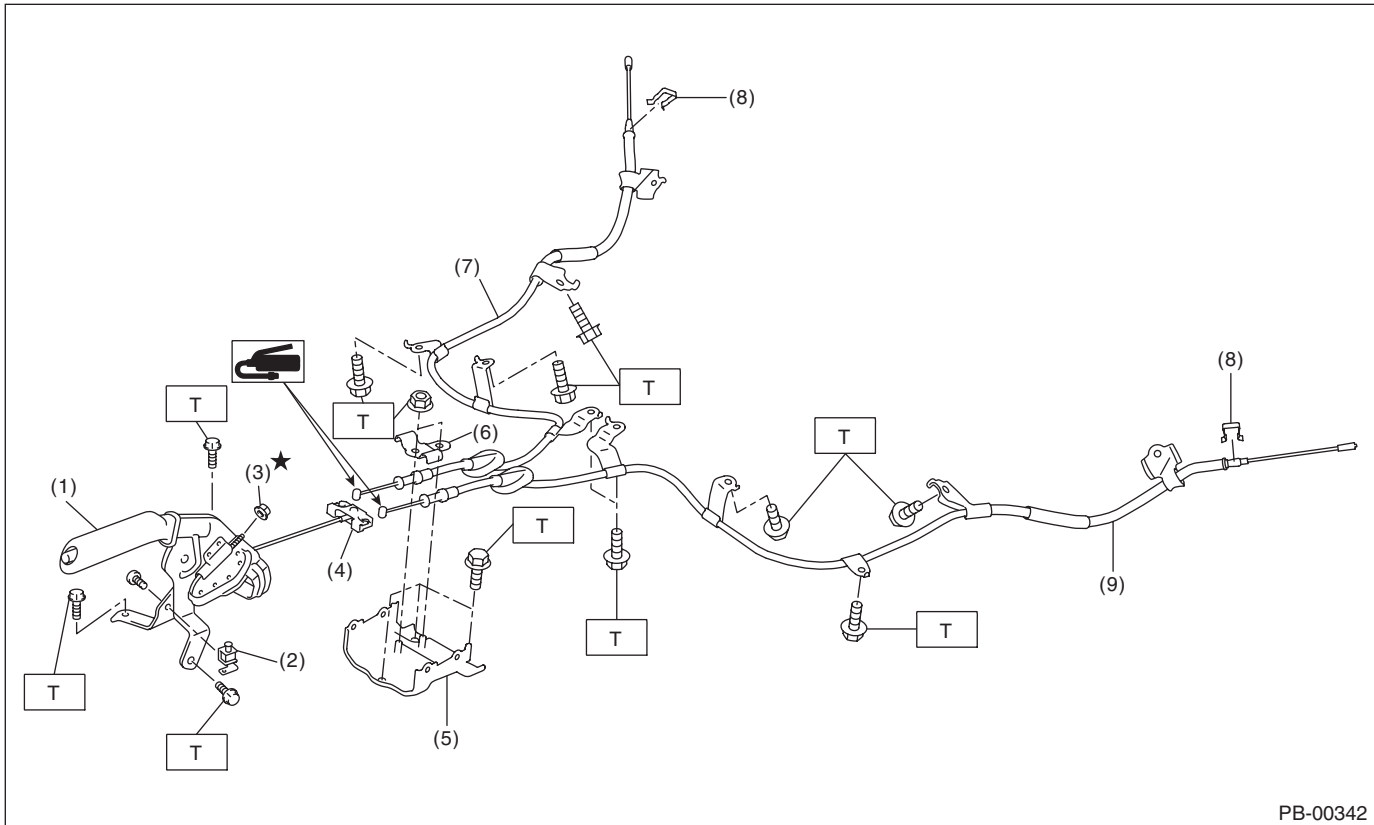
1. PARKING BRAKE (REAR DISC BRAKE)



PB-00279

- | | | |
|--------------------------------|------------------------------------|-----------------------------------|
| (1) Back plate - rear brake | (6) Parking brake shoe (secondary) | (11) Spring - primary shoe return |
| (2) Retainer - rear brake | (7) Spring - secondary shoe return | (12) Spring - adjuster |
| (3) Spring washer - rear brake | (8) Spring - strut | (13) Spring - shoe clamp |
| (4) Parking lever - rear | (9) Strut - brake | (14) Parking brake shoe (primary) |
| (5) Pin - parking lever | (10) Adjuster ASSY - rear brake | (15) Pin - shoe hold-down |

2. PARKING BRAKE LEVER & CABLE



PB-00342

- | | | |
|--------------------------------------|-----------------------------------|--|
| (1) Lever ASSY - hand brake | (5) Bracket | (9) Cable ASSY - parking brake LH |
| (2) Switch ASSY - hand brake | (6) Clamp A - hand brake cable | |
| (3) Adjusting nut (self-locking nut) | (7) Cable ASSY - parking brake RH | Tightening torque: N·m (kgf-m, ft-lb) |
| (4) Equalizer | (8) Clamp B - hand brake cable | T: 18 (1.8, 13.3) |

C: CAUTION

- When performing any work, always wear work clothes, a work cap and protective shoes. Additionally, wear a helmet, protective goggles, etc. if necessary.
- When performing a repair, identify the cause of trouble and avoid unnecessary removal, disassembly and replacement.
- Some vehicle components are extremely hot immediately after driving. Be wary of receiving burns from heated parts.
- Use SUBARU genuine grease, the recommended or equivalent. Do not mix grease etc. of different grades or manufacturers.
- Be sure to tighten fasteners including bolts and nuts to the specified torque.
- Always use the jack-up point when the shop jacks or rigid racks are used to support the vehicle.
- Apply grease onto sliding or revolving surfaces before installation.
- Be sure that the surface of brake disc, brake pad or brake shoe is free from grease or oil.

D: PREPARATION TOOL

1. GENERAL TOOL

TOOL NAME	REMARKS
Circuit tester	Used for measuring resistance and voltage.